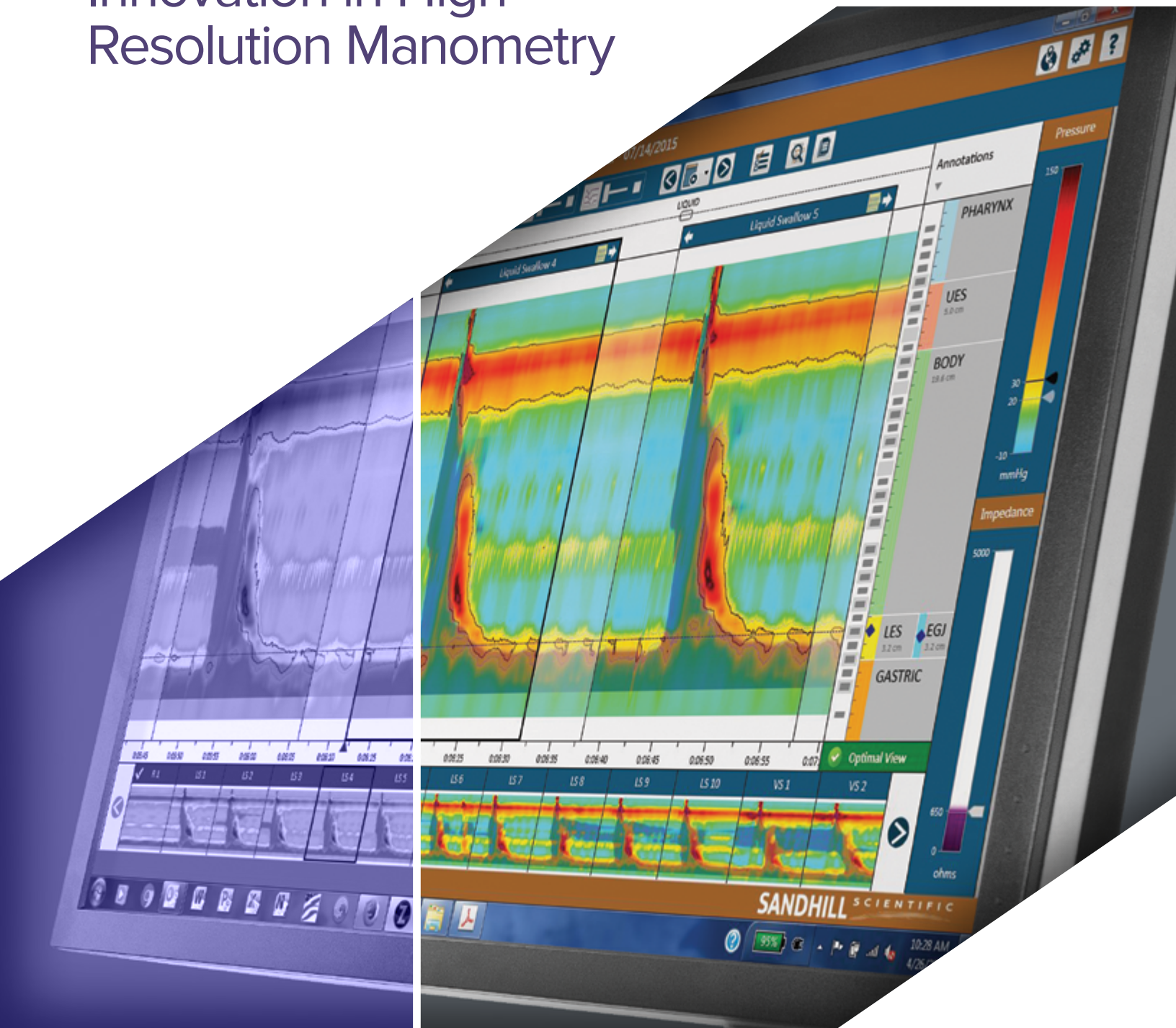


Innovation in High Resolution Manometry

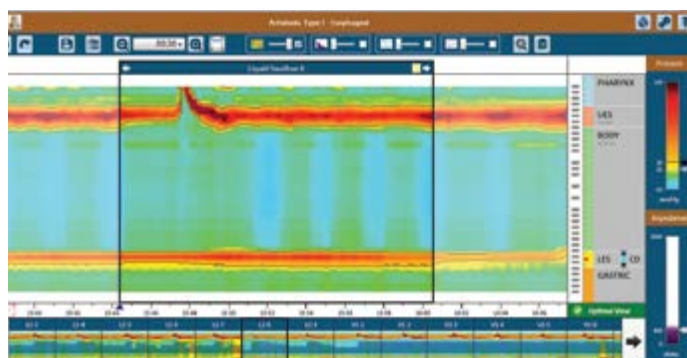
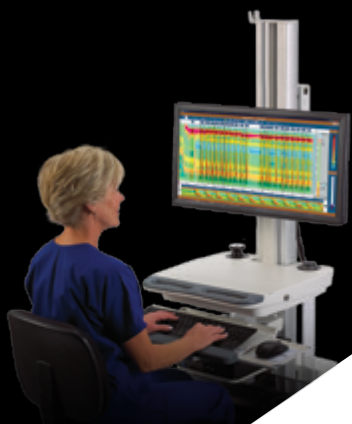


The InSIGHT Ultima® System featuring Zvu® Advanced Diagnostic GI Software.

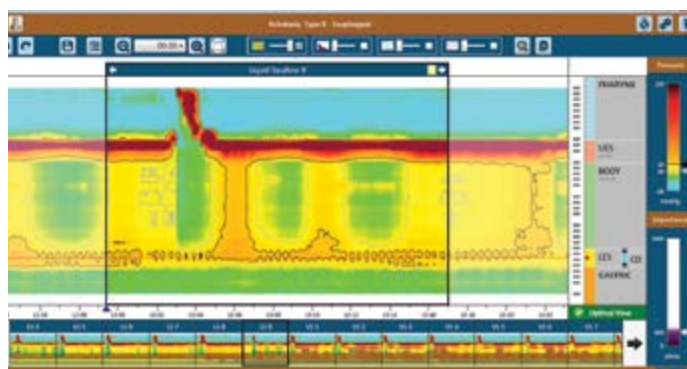
The single platform for High Resolution Manometry

At first glance, you can now quickly assess and classify swallows with our unique swallow thumbnail bar. Visually stunning, pressure and impedance data with simplified control to customize views, color palettes and report templates. Real-time metrics at your fingertips, all designed to enhance your experience.

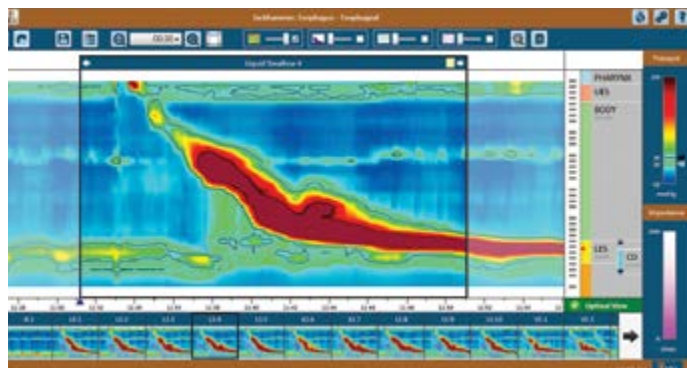
Comprehensive. Versatile. Insightful. Get all that and more with the all new Zvu®.



Achalasia Type I

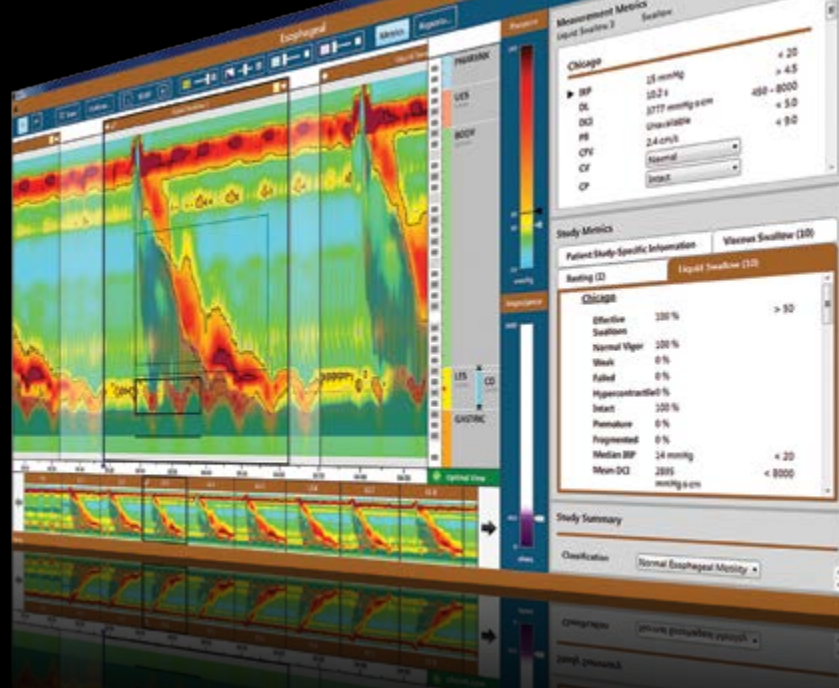


Achalasia Type II



Jackhammer



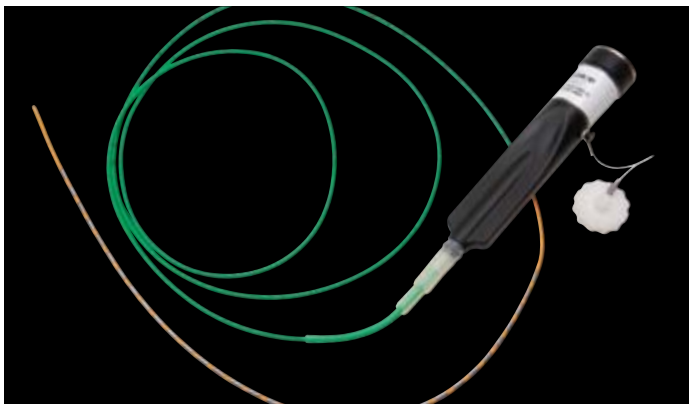


All patients with suspected achalasia who do not have evidence of a mechanical obstruction on endoscopy or esophagram should undergo esophageal motility testing before a diagnosis of achalasia can be confirmed.¹

HRiM Probes



HRiM² 12 Fr Probe (32 pressure, 16 impedance)



HRiM^{SD} 8 Fr Probe (32 pressure, 16 impedance)

Chicago Classification 3.0

Disorders of EGJ Outflow Obstruction

Achalasia

- Type I: 100% failed peristalsis [no PEP]
- Type II: 100% failed peristalsis [+ PEP]
- Type III: >20% premature contractions

EGJ Outflow Obstruction

- Incompletely expressed achalasia
- Mechanical obstruction

Major Disorders of Peristalsis Entities Not Seen in Normal Controls

Distal Esophageal Spasm (DES)

- ≥ 20% premature contractions (DL < 4.5s)
- Jackhammer esophagus
- ≥ 20% of swallows with DCI > 8,000 mmHg-s-cm and normal DL

Absent Contractility

- No scorable contraction by DCI and DL criteria (should consider achalasia with borderline IRP and/or bolus pressurization)

Minor Disorders of Peristalsis Impaired Bolus Clearance

Ineffective Motility (IEM)

- >50% ineffective swallows
- Fragmented Peristalsis
- >50% fragmented swallows and not meeting criteria for IEM (mean DCI > 450 mmHg-s-cm)

Innovations in Clinical Education

Diversatek University Online

Our online training platform contains free content on esophageal and anorectal manometric studies, as well as impedance/pH reflux monitoring studies. Included are tutorials providing step-by-step guidance to develop skills in data acquisition, study review and report generation. Simply go to **DiversatekHealthcare.com** to request log-in information.

Denver Training Center

Our Technical Research & Training Center specializes in clinical education and personalized training to make learning easy and convenient. Our comprehensive clinical instruction provides users with the knowledge and skills necessary to effectively acquire and analyze high resolution impedance manometry studies, impedance/pH reflux monitoring studies and anorectal manometry studies. Email us at **clinicaleducation@diversatekhc.com** or visit us online to learn more about our Denver course offerings.

Webinars

Diversatek Healthcare is proud to present a series of live, interactive discussions on topics related to esophageal function testing, impedance/pH reflux monitoring studies and anorectal manometry. Each webinar includes a didactic session followed by an open discussion. All webinars are recorded and posted to the Diversatek U online portal for easy reference. Access **DiversatekHealthcare.com** for upcoming webinar announcements.

The Diversatek Healthcare Review

Diversatek Healthcare Review, our monthly e-newsletter, features what's new at Diversatek University along with up-to-date product information. Every issue also includes our Clinical Insights, providing educational tips for Z/pH and HRiM analysis as well as answers to the most frequently asked questions.

Personalized Clinical Support

Onsite Training

Diversatek Healthcare Clinical Specialists deliver product support to suit your specific needs—on your schedule. Specialists are onsite at your facility to train and support you on your Diversatek Healthcare manometry or reflux monitoring equipment as you work through patient cases, acquire and analyze patient data, and create patient reports.

Virtual Coaching

Online and in real-time, Diversatek Healthcare Clinical Specialists work with you via screen sharing to provide study-specific data review and report generation coaching for your more difficult studies. Email us at **clinicalsupport@diversatekhc.com** to schedule a one-on-one session.



Diversatek™ Healthcare

Advancing GI care by driving science, developing and delivering solutions, and providing unmatched clinical support.

References

1. ACG Clinical Guideline: Diagnosis and Management of Achalasia. Michael F. Vaezi, MD, PhD, MSc, FACP, John E. Pandolfino, MD, MSCI2 and Marcelo F. Vela, MD, MSCR3

DiversatekHealthcare.com

P 800.558.6408 or 414.265.7620

Corporate Headquarters

102 East Keefe Avenue
Milwaukee, WI 53212 USA

orders@diversatekhc.com
sales@diversatekhc.com

Technical Research & Training Center

9150 Commerce Center Circle, Suite 500
Highlands Ranch, CO 80129 USA

technicalsupport@diversatekhc.com
clinicalsupport@diversatekhc.com
clinicaleducation@diversatekhc.com

Learn more from
your personal product
representative at
800-558-6408